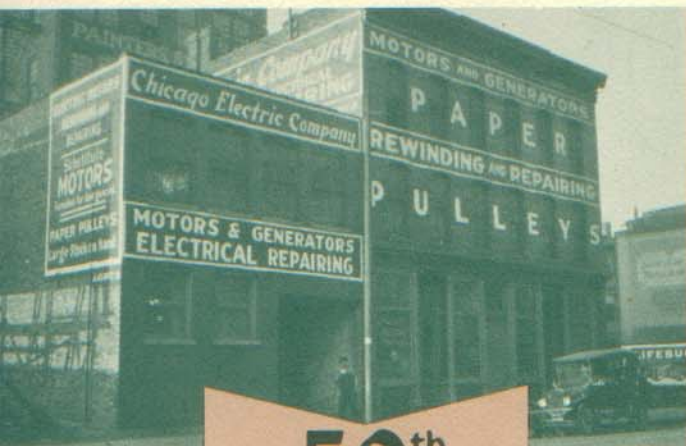
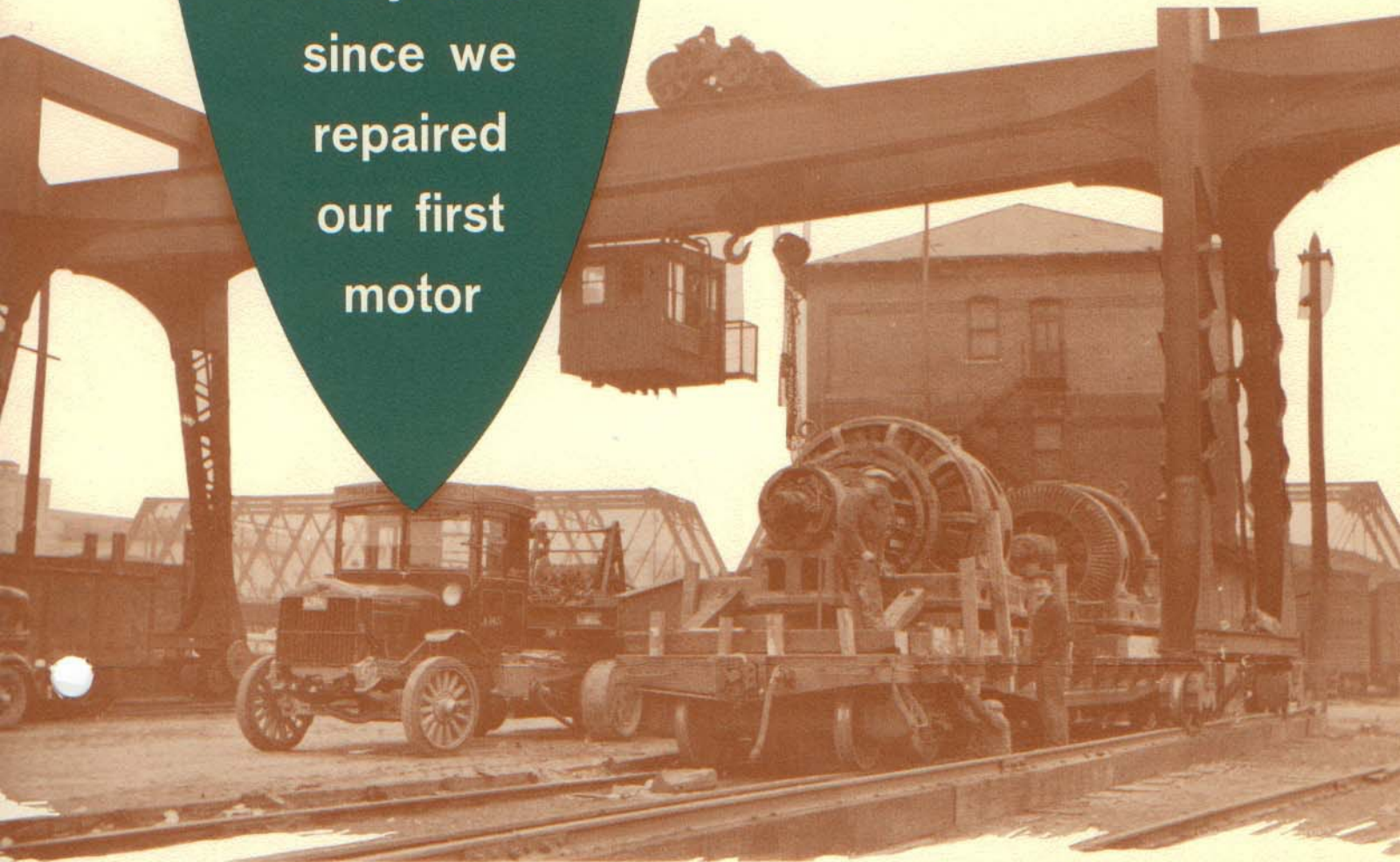


... but it's been  
50 years  
since we  
repaired  
our first  
motor



Even in those days we  
handled **BIG** electrical power units

From the very beginning, CHICAGO ELECTRIC specialized in the rebuilding and repair of big equipment used for the generation and distribution of electric power. As industrialization grew in Chicago and the midwest, firms such as Pullman, Armour, Swift and The Edison Company looked to CHICAGO ELECTRIC for prompt and dependable service. Many of the firms served in those early days are still being served today!

Our **50<sup>th</sup>** Year

1910  
to  
1960



**CHICAGO** *Electric Co.*

1332-34 W. CERMAK ROAD • CHICAGO 8, ILLINOIS

America's Headquarters  
for Guaranteed Rebuilt  
Electric Power Equipment



Today, as always...

**CHICAGO**

*Electric*

is doing the  
**BIG JOBS**

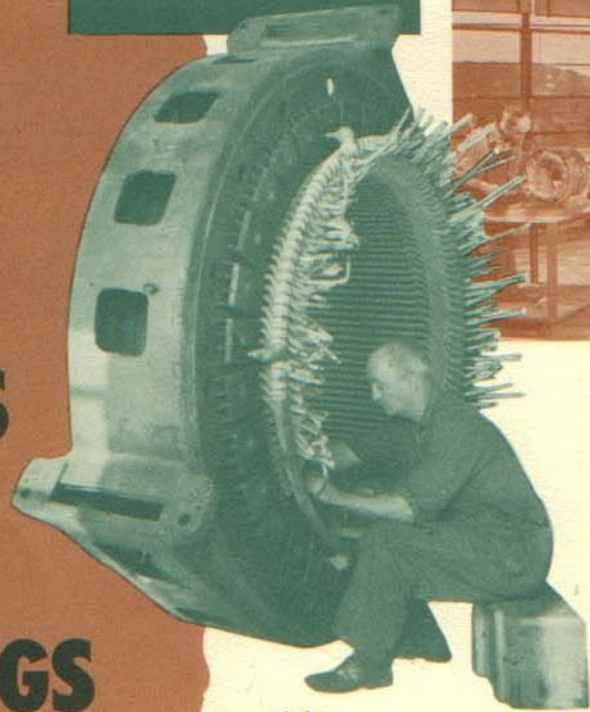
in repair and  
rebuilding of  
electrical power  
equipment

and selling  
**BIG UNITS**

at prices  
that effect

**BIG SAVINGS**

**SALES  
AND  
SERVICE**



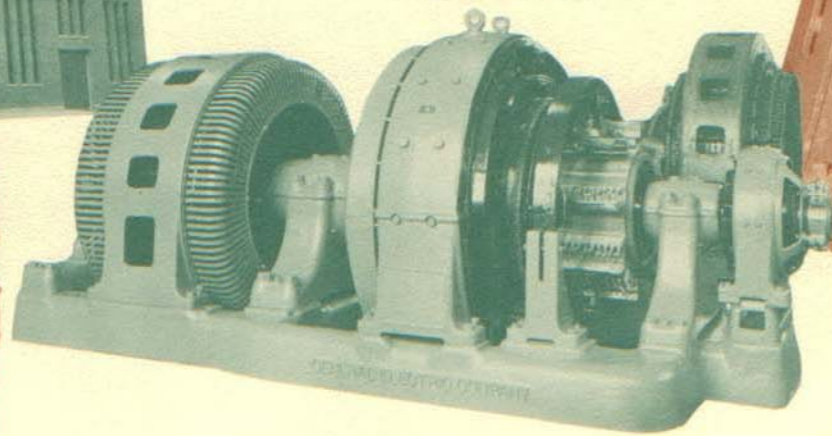
*Budget  
Load Lifts!*  
AUTHORIZED  
SERVICE  
SHOP



ALLIS-CHALMERS  
CERTIFIED  
SERVICE SHOP

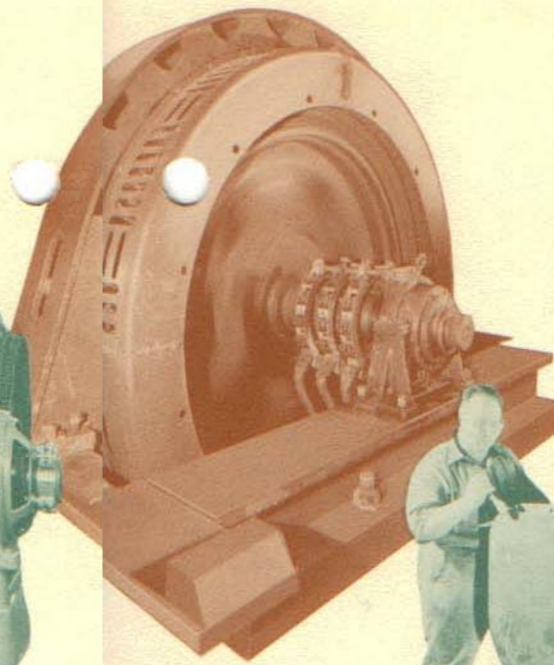
**MG SETS**

Available and on Foundation  
3000—2500—2000 KW  
in stock  
1500 KW thru 3 KW



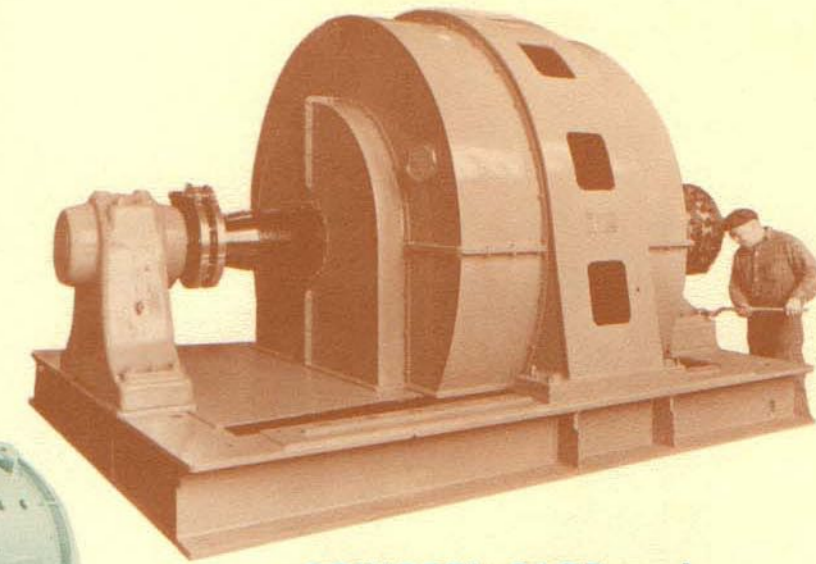
**FOUND ROTOR  
MOTORS**

All Capacities  
2500 HP thru 5 HP  
All Voltages—All Speeds



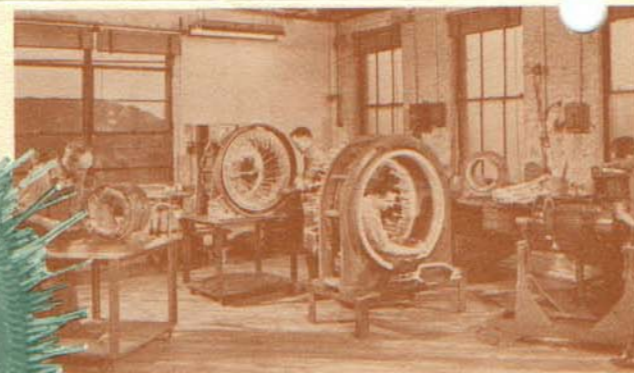
**DC MOTORS**

Mill and Industrial Duty  
3000 HP Tandem  
1500 HP thru 1 HP



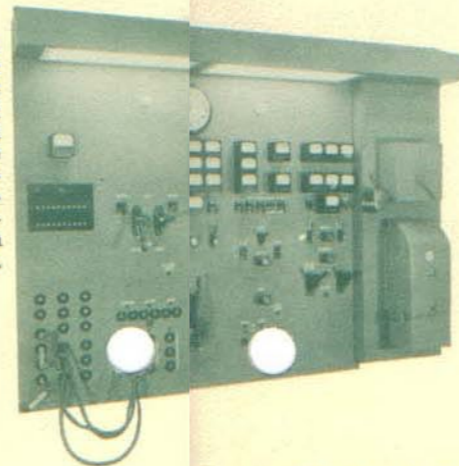
**SQUIRREL CAGE and  
SYNCHRONOUS MOTORS**

3000 HP thru Fractional  
All Voltages—All Speeds



**REWINDING . . .  
LARGE OR SMALL**

Chicago Electric's rewinding service has no equal for quality. Each phase of the job from coil forming and initial winding to the final individual high-voltage breakdown tests, is thoroughly and expertly executed. The rewinding department is equipped with complete baking facilities.



**MODERN TEST  
FACILITIES**

A special unit developed and built by CHICAGO ELECTRIC Engineers combines all the necessary equipment and instrumentation required to test AC and DC equipment up to 1000 horsepower. A special machine simulates rated loads and overloads for accurate testing of crane and hoist equipment.

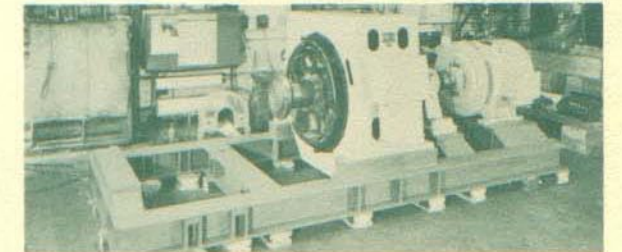
**SPECIAL MACHINING**

Large rotating equipment that requires modification in shaft and bearing construction can be easily handled. Our equipment is large enough to accommodate any type job.



**CUSTOM FABRICATION  
and ASSEMBLY**

CHICAGO ELECTRIC is set up to handle practically any type of special job. Steel fabricated bases, equal or superior to any on the market, can be designed and built to your specifications. The same is true of housings and assembly of special units.



**EXPERIENCED ENGINEERS,  
TECHNICIANS and STAFF**

Every CHICAGO ELECTRIC employee takes pride in the part he has in maintaining satisfied customers. Our engineers have the experience and practical "know how" to faithfully interpret your needs. Our office staff is trained to provide prompt and specific information on your jobs.



**DURING THE PAST 50 YEARS,**

more and more of the nation's leading industrial firms have turned to CHICAGO ELECTRIC to purchase the electrical power equipment and to obtain the engineering services they needed.

The next time you need additional power equipment or require dependable service work, call CHICAGO ELECTRIC . . . the right combination of facilities, service and skill to solve your power problems.



Phone: CAnal 6-2900

**CHICAGO Electric Co.**

1332-34 W. CERMAK RD.  
CHICAGO 8, ILL.