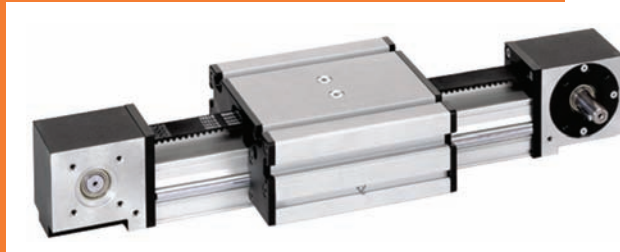


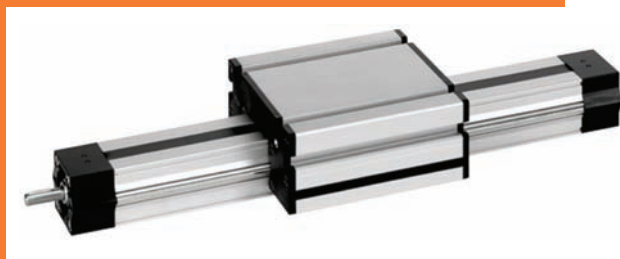
ServoLinear™ actuators range from single axis units to complete machine solutions. Our emphasis is on high performance systems requiring servo position accuracy and long travel distances. Typical applications include automatic assembly and material handling. The wide variety of actuator types available provides the component that is right for the job.

Belt Drive



	Speed in/sec	Stroke inches	Load lbs.	Thrust lbs.	Accuracy
B-PL-40x40	200	216	229	137	.004 in./12.0 in.
B-SQ-80x80	200	224	882	631	.004 in./12.0 in.
B-LM-100x100	200	224	1573	764	.004 in./12.0 in.

Ball Screw Drive



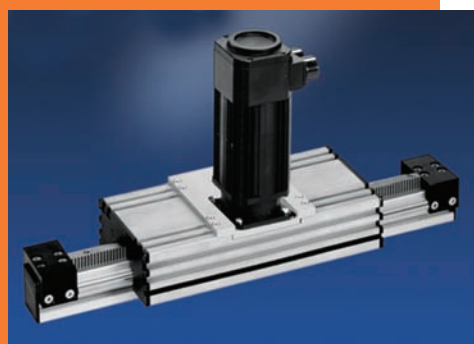
	Speed in/sec	Stroke inches	Load lbs.	Thrust lbs.	Accuracy
S-PL-40x40	8	114	229	376	.004 in./12.0 in.
S-PL-80x80	8/16	114	573	685	.004 in./12.0 in.

Ball Screw/Ball Rail Drive



	Speed in/sec	Stroke inches	Load lbs.	Thrust lbs.	Accuracy
SR-DL-80x80	30	114	696	540	.002 in./12.0 in.
SR-DL-120x80	30	114	1349	764	.002 in./12.0 in.

Rack and Pinion Drive



	Speed in/sec	Stroke inches	Load lbs.	Thrust lbs.	Accuracy
RP-SQ-80x80	200	1,160	573	505	.004 in./12.0 in.

“Plug and Play” Solution... Linear Motion Made Easy

ServoLinear™ actuators are typically furnished as a complete motion control solution, including the actuator, gear reducer, servo motor, positioning controller and operator interface. The components are designed to work together providing high performance, ease of use and long operating life. The system is assembled, programmed, tested and ready to run... Linear motion made easy.

Gear Reducer

- Servo-rated planetary design
- Low backlash; lifetime lube gearing
 - 100 in. lb. torque rating
 - Ratios from 3:1 to 8:1



Servo Motor

- High performance AC servo
- Torque ratings from 7 to 37 in. lbs. continuous
 - Speeds up to 5000 rpm
 - Encoder feedback for position control



Positioning Controller

- Epsilon Series positioning controller
- Home, Jog, Index, and Torque functions
 - 115/230 VAC input power
 - FREE programming software



Machine Interface

- Operator interface for ServoLinear™ system
 - Single or multi axis control
- Ethernet port with built-in Web server
 - FREE programming software

